



Geospatial analysis services



Product : Geofahm

www.fahmco.ir

Golas of Geospatial analysis



Step 1: Existing problems

1

Long term queries
depend on expert
accuracy

2

Simultaneously Use of
several specialized and
non-specialized software

3

Lack of coordination
between firms in
submitting inquiries

4

people's confusion

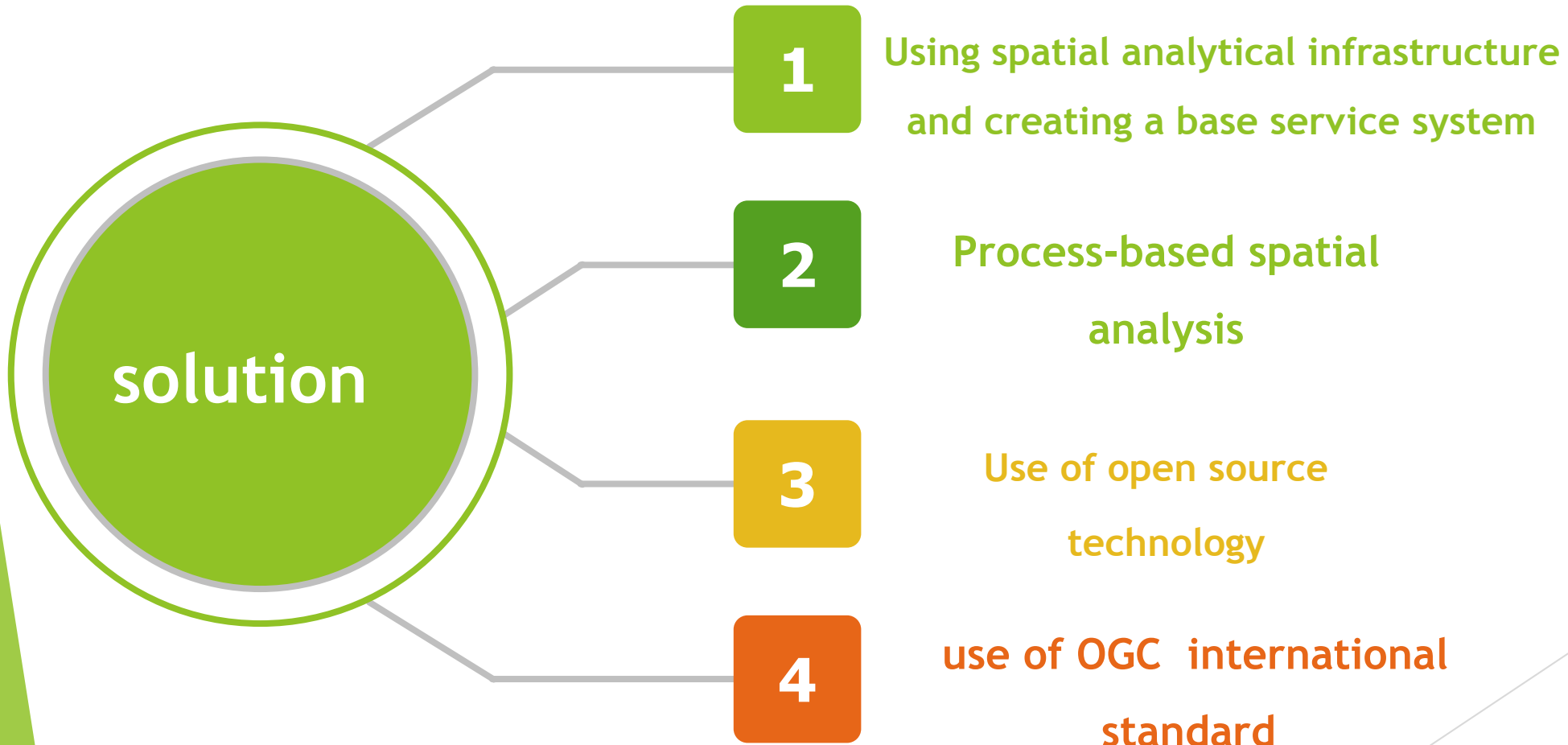
5

Lack of infrastructure to
provide a location
analytics service for use
on other platforms

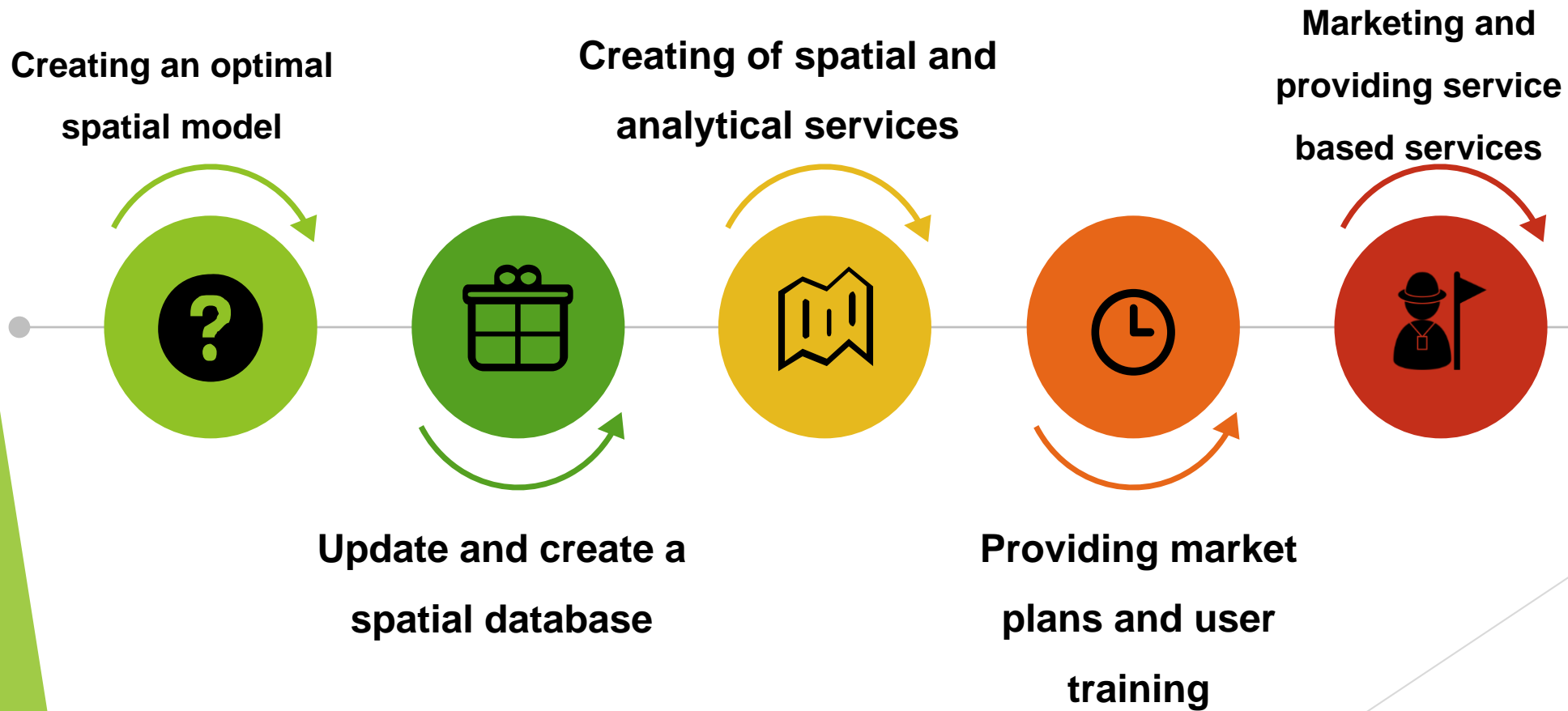
6

time consuming and
costly Creating custom
analytics

Step 2: Solution



Process and steps of implementing spatial services



Step 3: Completed projects

Creating Bushehr Spatial Data
Infrastructure (Iran)

0
4

Establishment of flood
management system (GLOBAL)

0
2

0
3

Establishment of national spatial data
infrastructure of the Surveying
Organization of Iran (Iran SDI)

0
1

Creating a Spatial Crisis Management
Portal (Asia Pacific)

Step 3: Completed projects

Spatial system of water and sewage

08

Spatial Data Infrastructure of
Forests Organization (Iran)

06

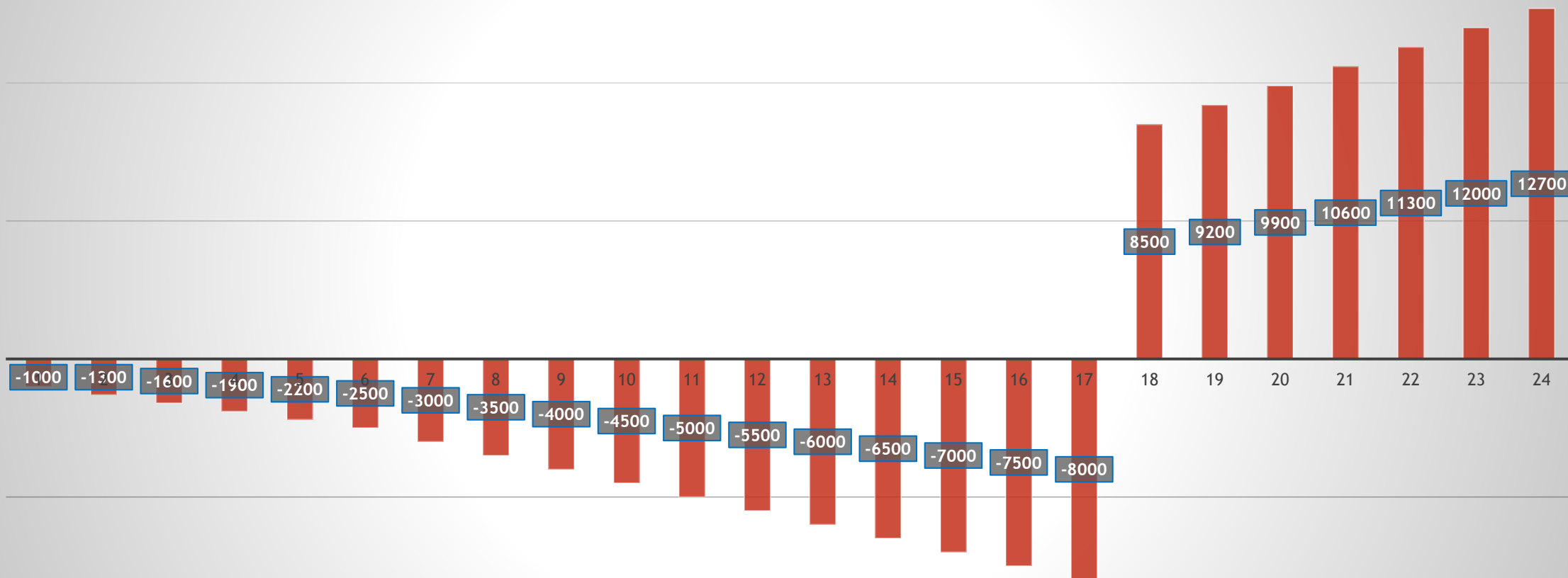
07

Creating spatial data infrastructure of
the Iranian Space Agency

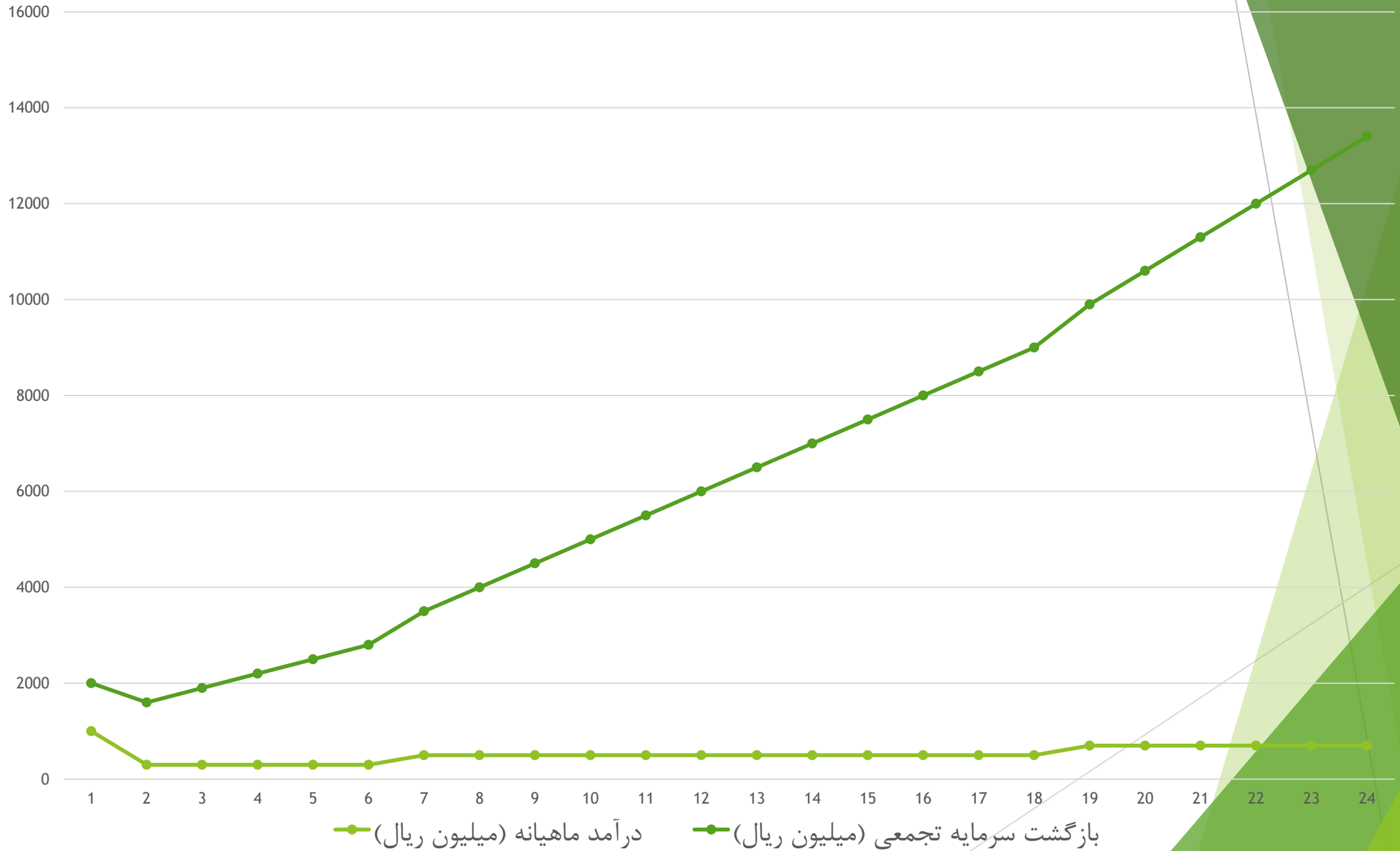
05

Creating an online spatial database of the
Housing Foundation of Iran (Iran)

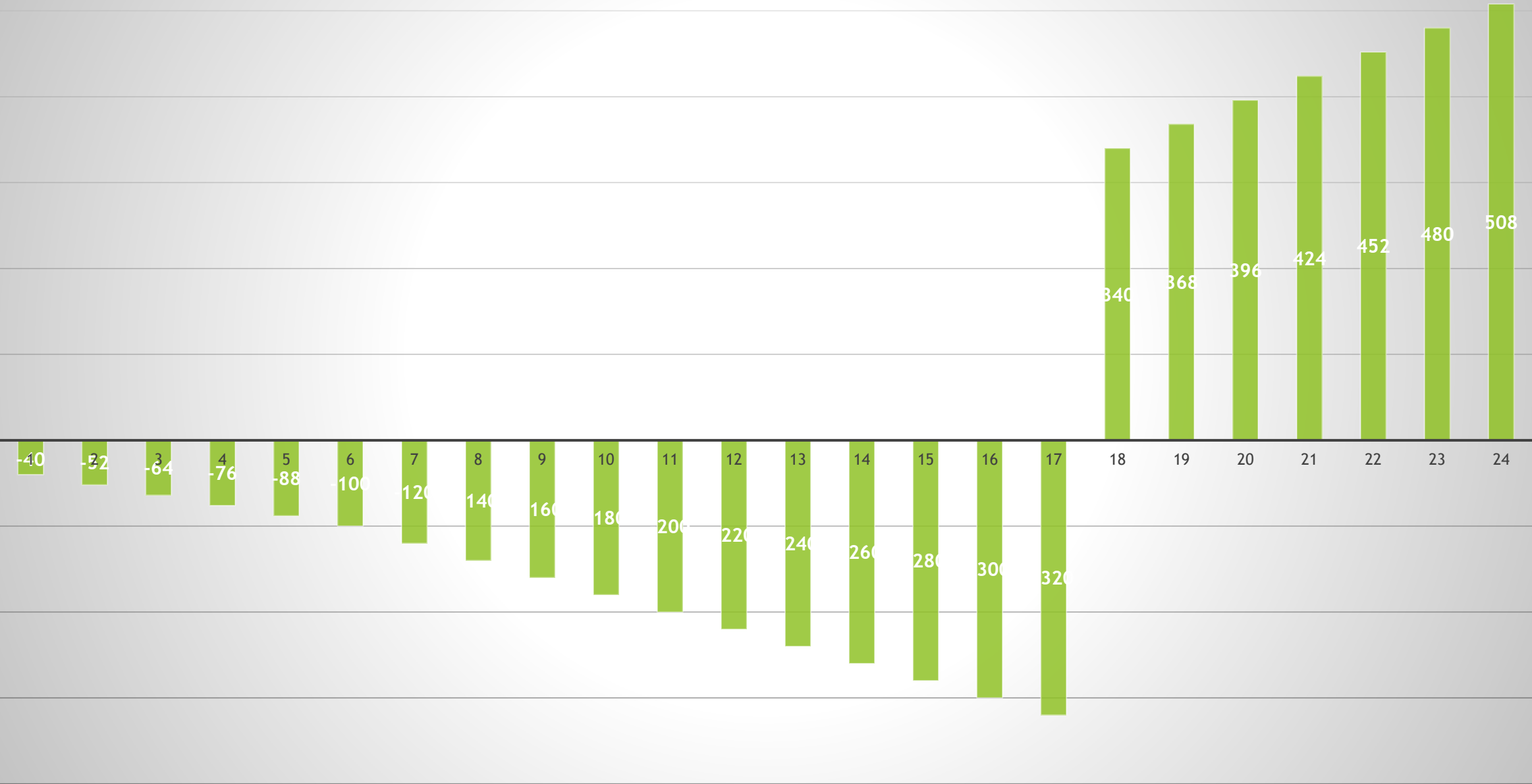
نمودار بازگشت سرمایه و سود تجمیعی در مدت ۲۴ ماه (میلیون ریال)



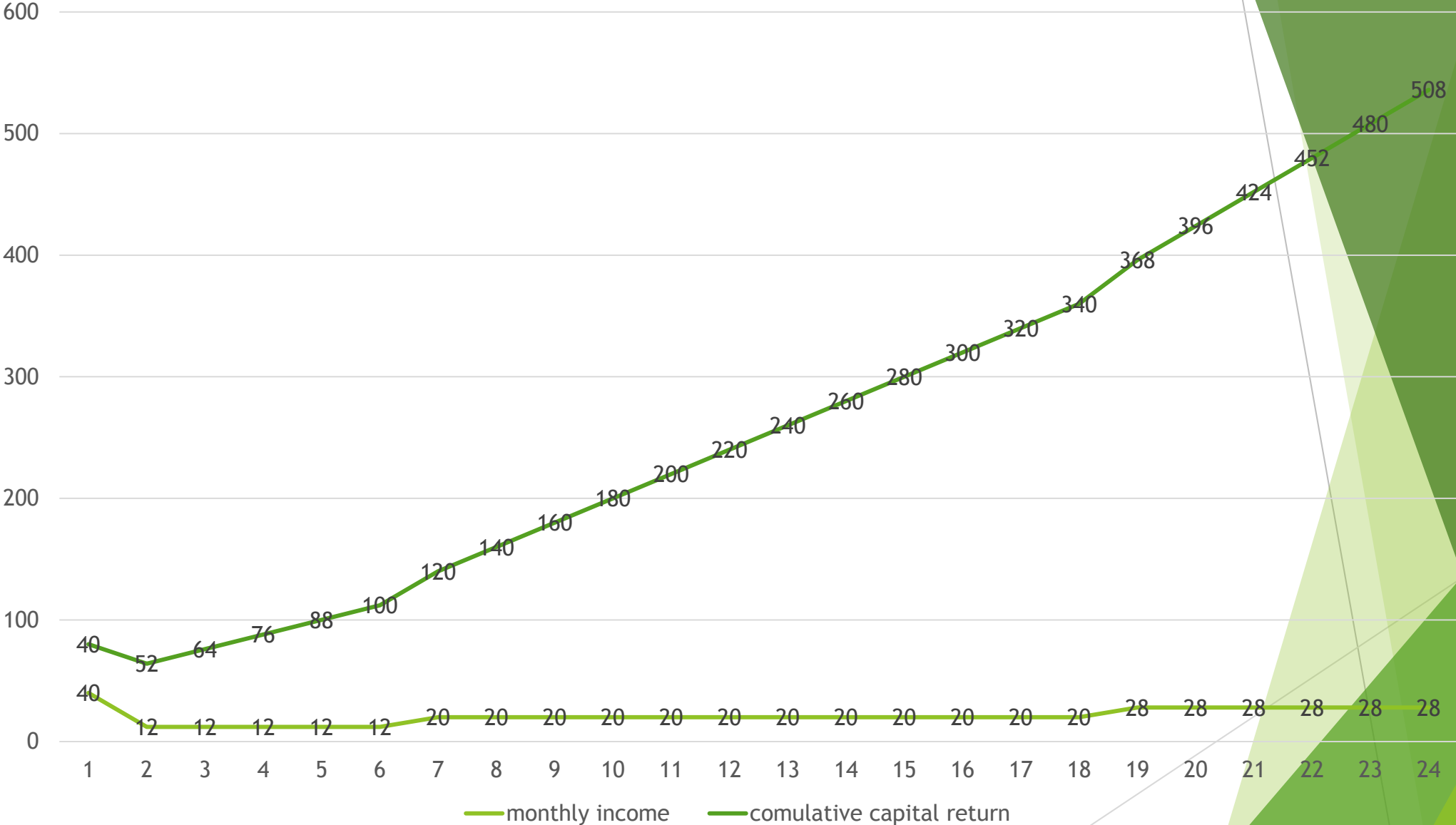
نمودار نسب درآمد ماهیانه و بازگشت سرمایه (میلیون ریال)



Capital return chart for 24 months (\$)



Monthly income and return ratio chart (\$)



Step 4: international competitors



Welcome to the INSPIRE Geoportal

The INSPIRE Geoportal is the central European access point to the data provided by EU Member States and several EFTA countries under the INSPIRE Directive. The Geoportal allows:

- monitoring the availability of INSPIRE data sets;
- discovering suitable data sets based on their descriptions (metadata);
- accessing the selected data sets through their view or download services.

The metadata used in the Geoportal are regularly harvested from the discovery services of EU Member States and EFTA countries. The status of harvesting is available here.

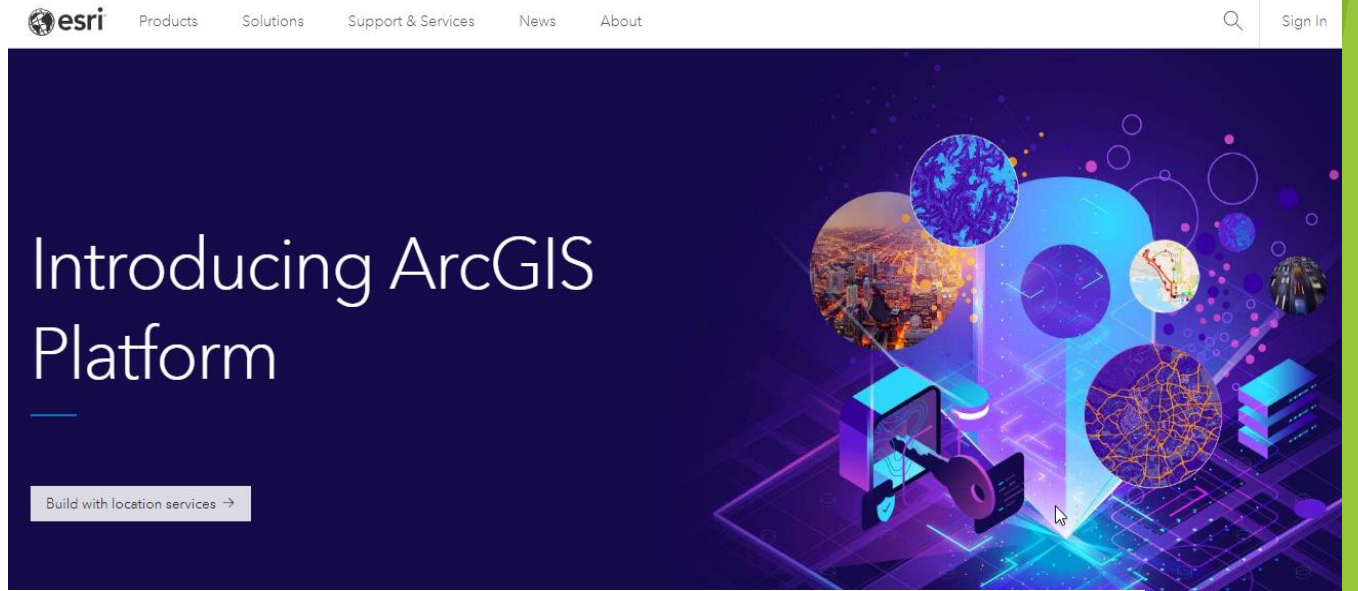
Feedback regarding the functionality as well as data set availability is welcome here.

Priority Data Sets Viewer

The application displays the availability and provides access to the selected priority data sets used for environmental reporting. It allows filtering by environmental domain, environmental legislation and country, as well as individual priority data sets.

INSPIRE Thematic Viewer

The application displays the availability and provides access to all EU MS data sets falling under the scope of INSPIRE Directive filtered by data themes and countries (i.e. Annex I, II and III).



FGDC.GOV
FEDERAL GEOGRAPHIC DATA COMMITTEE

HOME | WHO WE ARE | WHAT WE DO | INITIATIVES | ORGANIZATION | RESOURCES | Q

News	Events
<p>FGDC Seeks Nominations for National Geospatial Advisory Committee Dec 31, 2020</p> <p>Multi-agency Partnership for NSDI Hydrographic Framework Datasets Awarded 2019 Doug D. Nebert NSDI Champion Award. Learn more</p>	<p>Apr 27 April 27-28, 2021 NGAC Webinar Meeting Webinar</p> <p>Jun 29 June 29-30, 2021 NGAC Webinar Meeting Webinar</p> <p>More Events</p>
<p>DOT Announces Release of Work Zone Data Exchange (WZDx) Specification Version 3 Oct 14, 2020</p> <p>More News</p>	

I want to

- Download Geospatial Standards
- Learn about Geospatial Metadata
- Find Data & Services
- Contribute my Data
- Make a Map

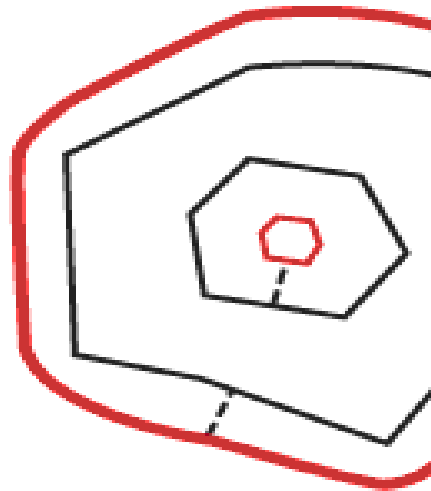
Quick Links

Looking for Data, Services and Maps?

[VISIT GEOPLATFORM.GOV](#)



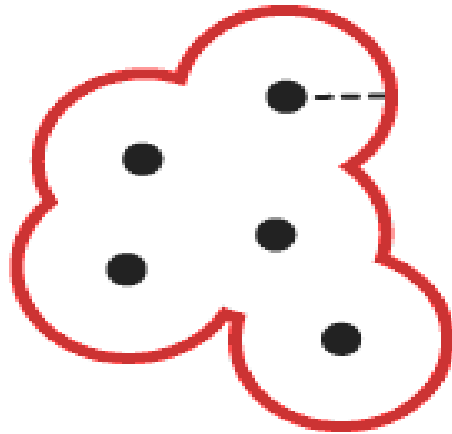
Buffering a line string



Buffering a polygon with one interior



Buffering a point



Buffering a multipoint

Applying examples

Buffer 2600 square kilometers around the toxic nuclear power plant.

Insurance employees check if
Is your accommodation within walking distance of a fire station?

The military uses geodetic buffers to detect the maximum remote danger of missiles and rockets.

Inquiry for changing Landuse with mathematical spatial functions

Spatial analyse

Project advantages

Make the right decision, make decisions based on information and analyze spatial data

Proper distribution of services and analysis of spatial processes

Define location-based processes depend on on queries

Modeling and creating cover databases

Meeting the needs of users in all areas, organizing and increasing the productivity of available resources

Optimization of investments and planning

Determine development capabilities in different areas and places

Target Market

Analysts and
researchers

4

All
programmers

3

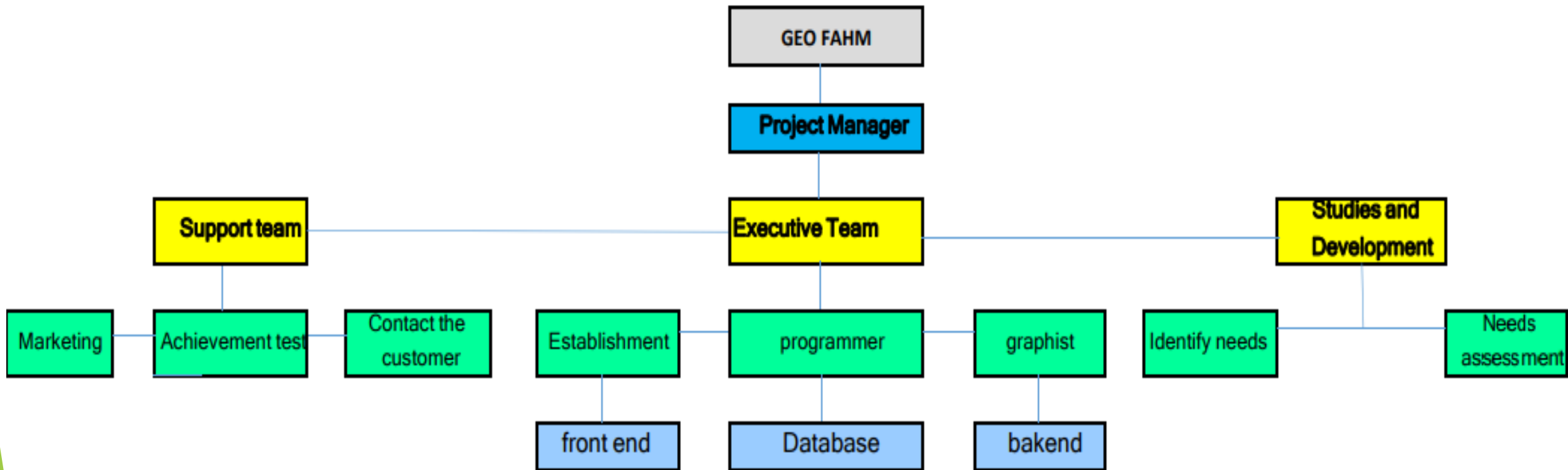
All
developer
startups

2

All process-
driven
executive
Organizations

1

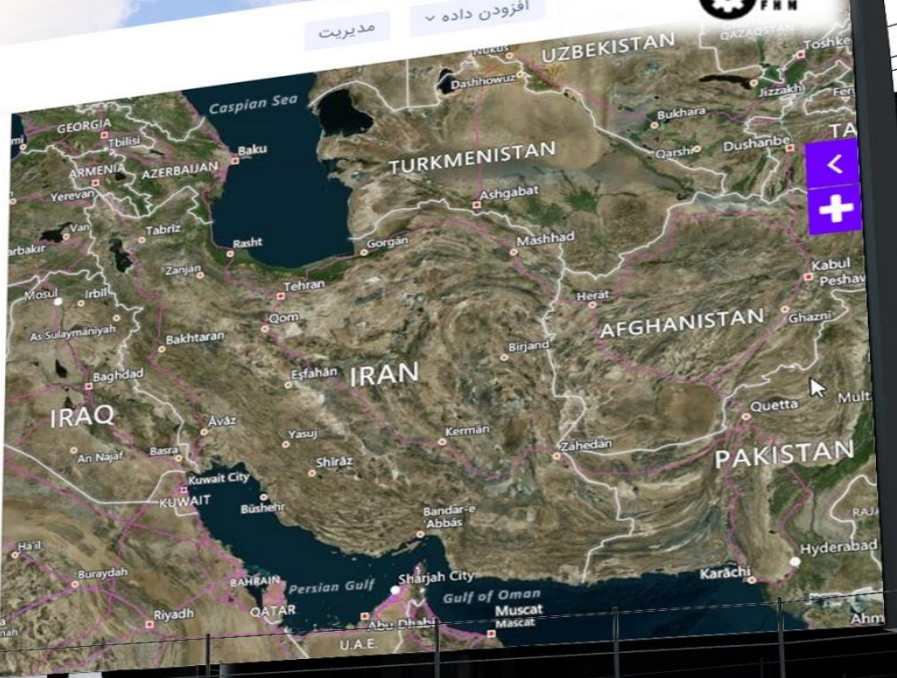
CHART





افزودن داده ▾ مدیریت

جستجو...
نتایج جست و جو
دسته بندی موضوعی
فیلتر های جستجو
فیلتر های جستجو
جستجو براساس محدوده مکانی
محدوده زمانی
دسته بندی

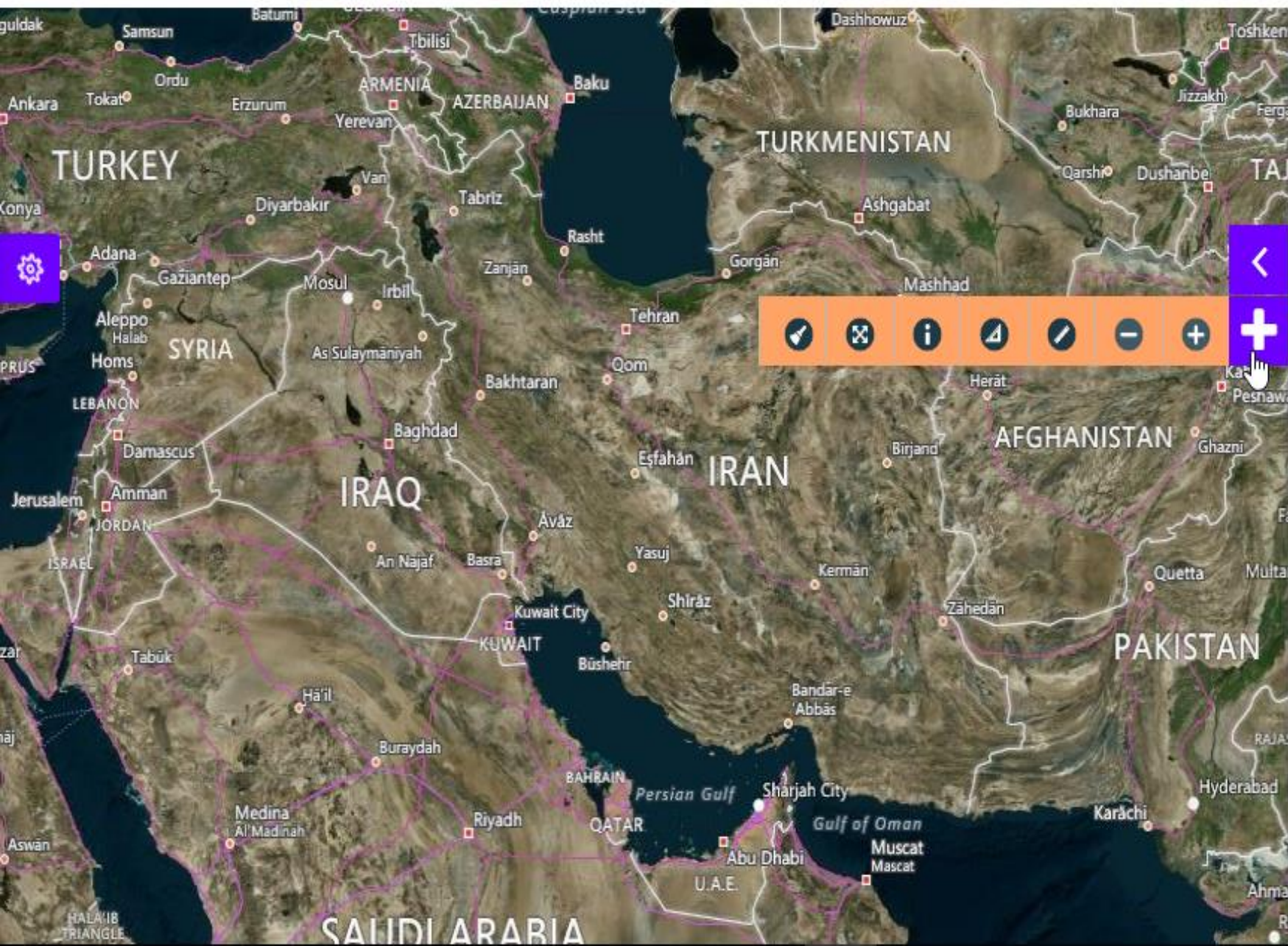




جستجو...

مدیریت

افزودن داده ▾



نقشه پایه ≡

نقشه معابر

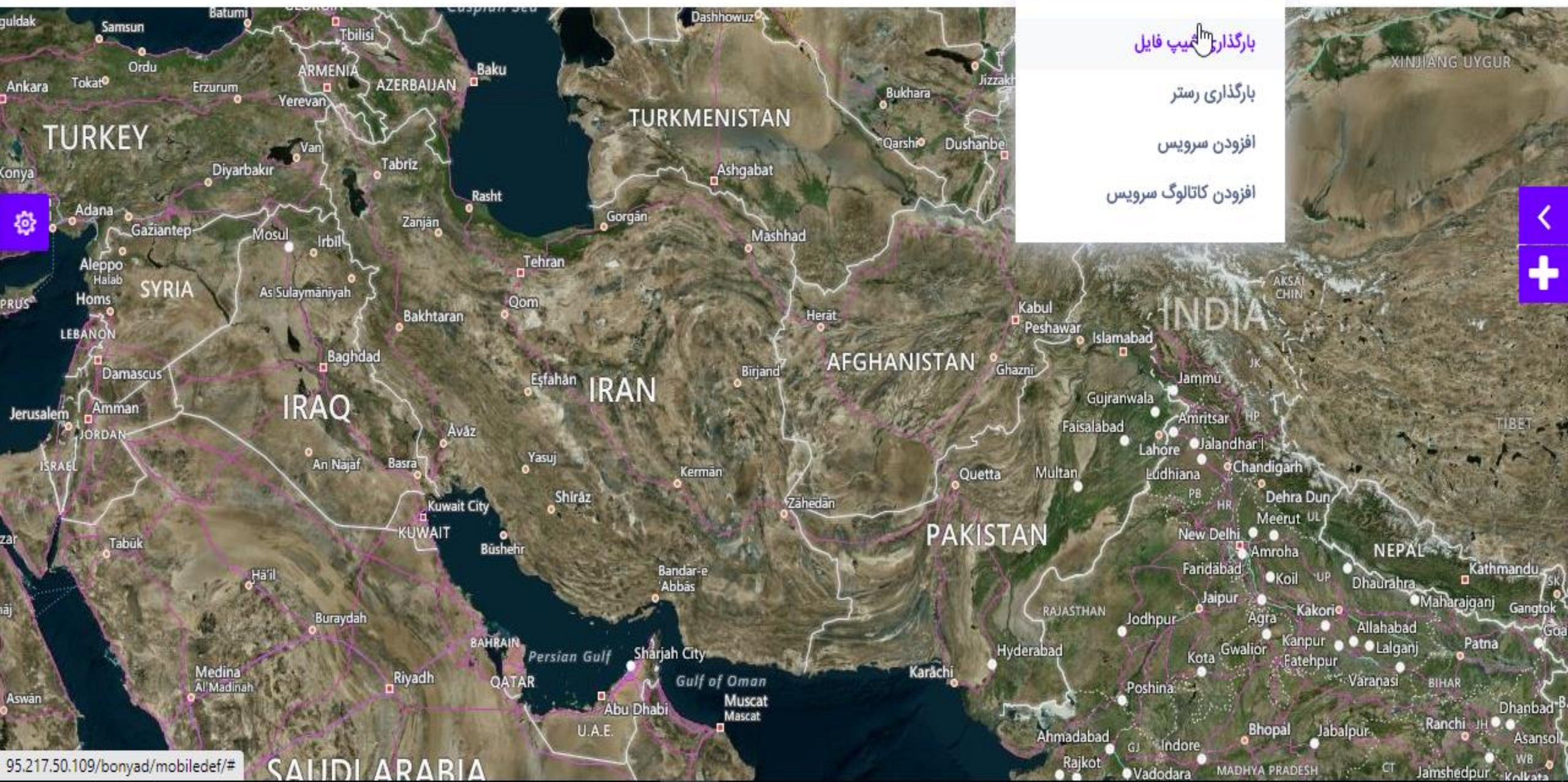
تصاویر ماهواره ای



جستجو...

مدیریت

افزودن داده



- بارگذاری فایل
- بارگذاری رستر
- افزودن سرویس
- افزودن کاتالوگ سرویس





جستجو...

برنامه ها

صفحات



کاربر

گروه

پشتیبانی

مجوزها

لایه ها

تعداد لایه های بارگزارای شده

دستگاه های مشارکت کننده

SD: ۲۲۶.۶۴ +۱.۹۱% BTC: ۸۴۳۵.۲۱ -۲.۶۲% USD: ۱۲۳۳.۵۴ +۵.۱۲% USD: ۸۴۳۵.۲۱ +

مشتری
+ ۴۵
۱۳۰%



هفتگی
۲۲۵۶
تومان
۱۵۵+



وظایف
+ ۱۷۰
۱۴۵%



پروژه
۸۴.۸%
۱۳۴%+



نقشه آمار دستگاه های مشارکت کننده

+

-





جستجو...

مدیریت

افزودن داده



نتایج جست و جو

دسته بندی موضوعی

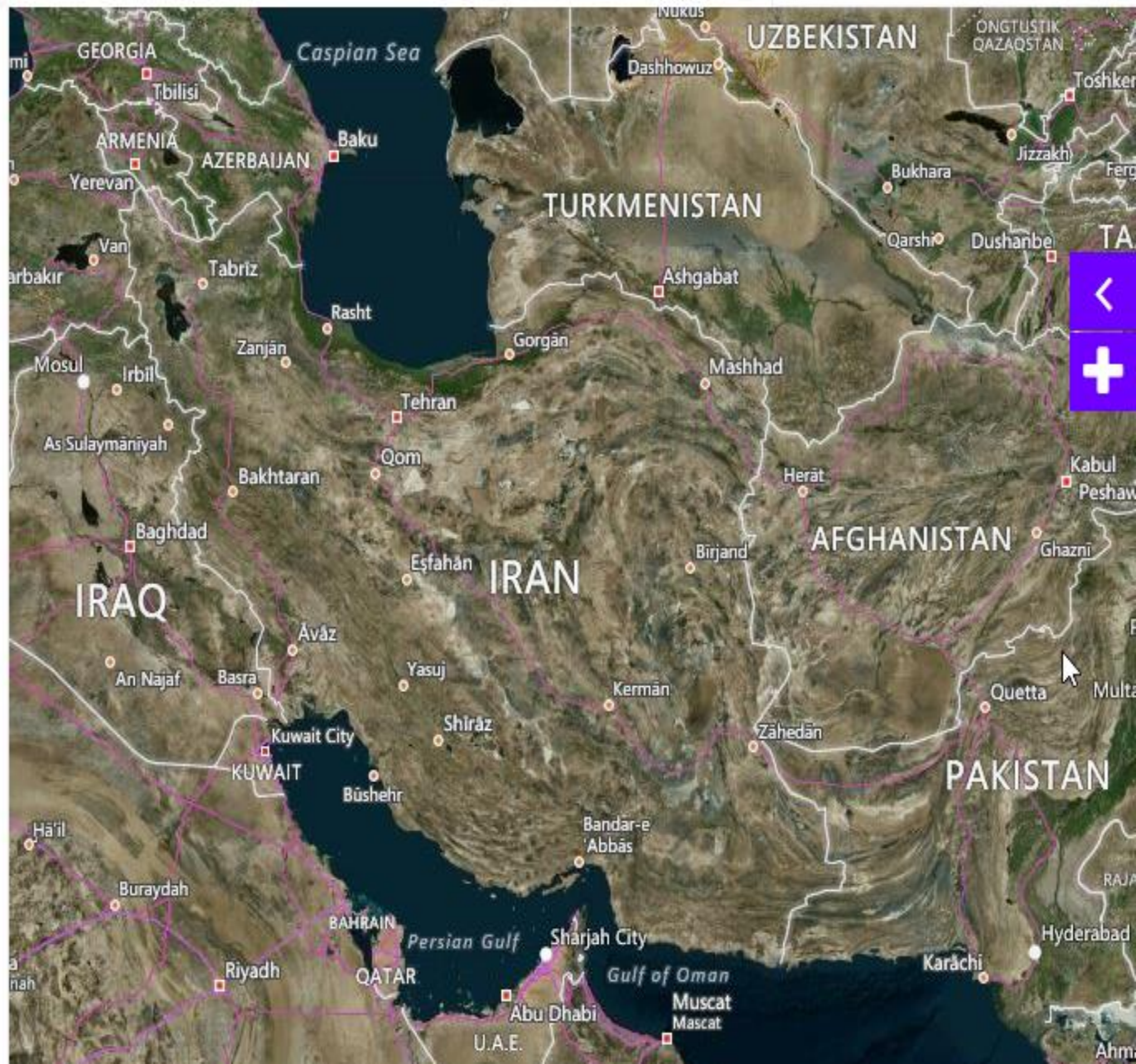
فیلتر های جستجو

فیلتر های جستجو

جستجو براساس محدوده مکانی

محدوده زمانی

دسته بندی





جستجو...

مدیریت

افزودن داده



نتایج جست و جو

دسته بندی موضوعی

فیلتر های جستجو



دسته بندی



عمومی

منابع طبیعی

آبخیزداری

بیابان

جنگل

اموراراضی

مرتع

خاک شناسی

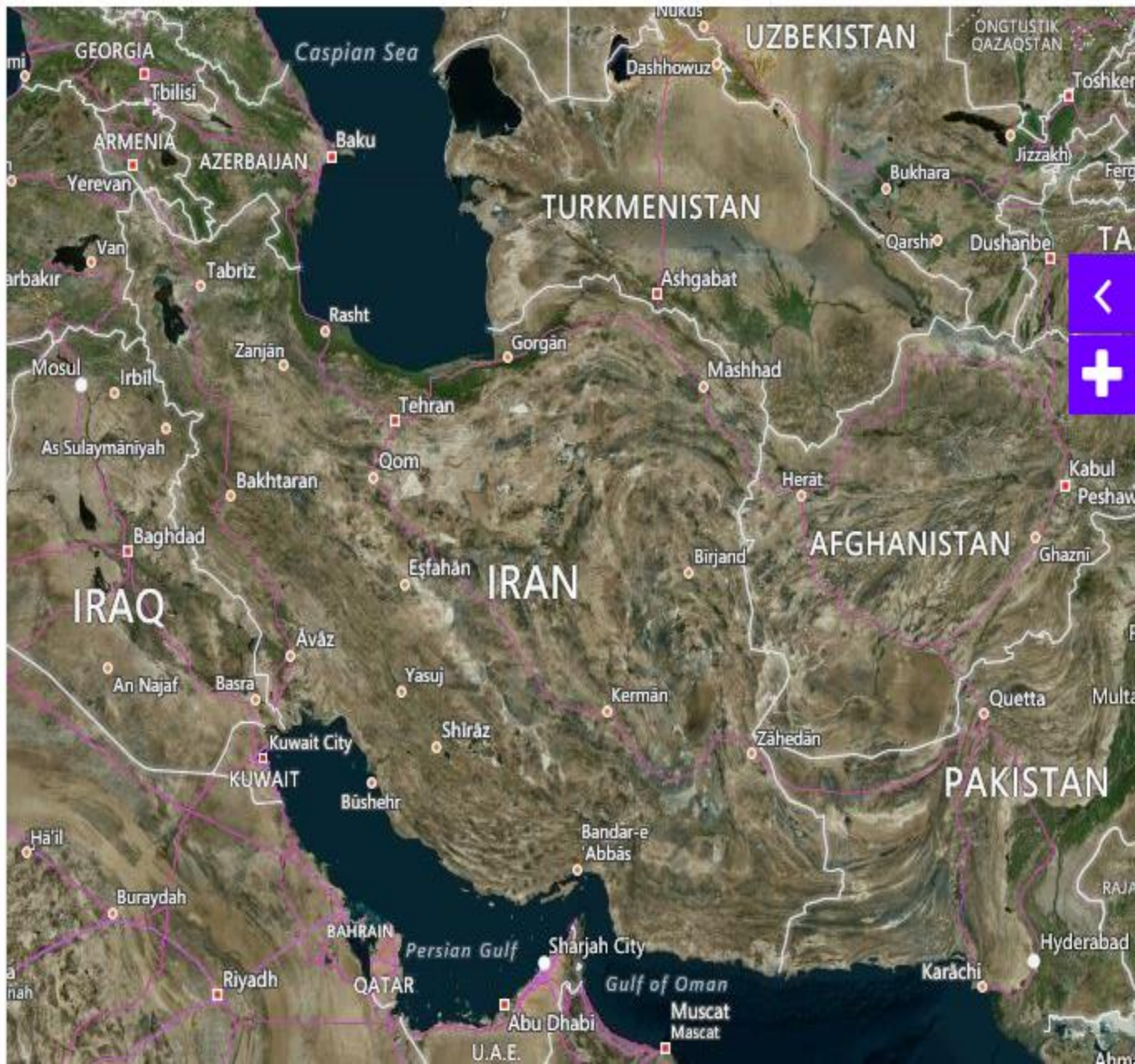
حفاظت و حمایت

هواشناسی

زمین شناسی و ژئومورفولوژی

محیط زیست

منابع آبی



فراداده

- اطلاعات شناسایی
- اطلاعات توزیع
- اطلاعات کیفیت داده
- اطلاعات فراداده

ذخیره تغییرات لغو

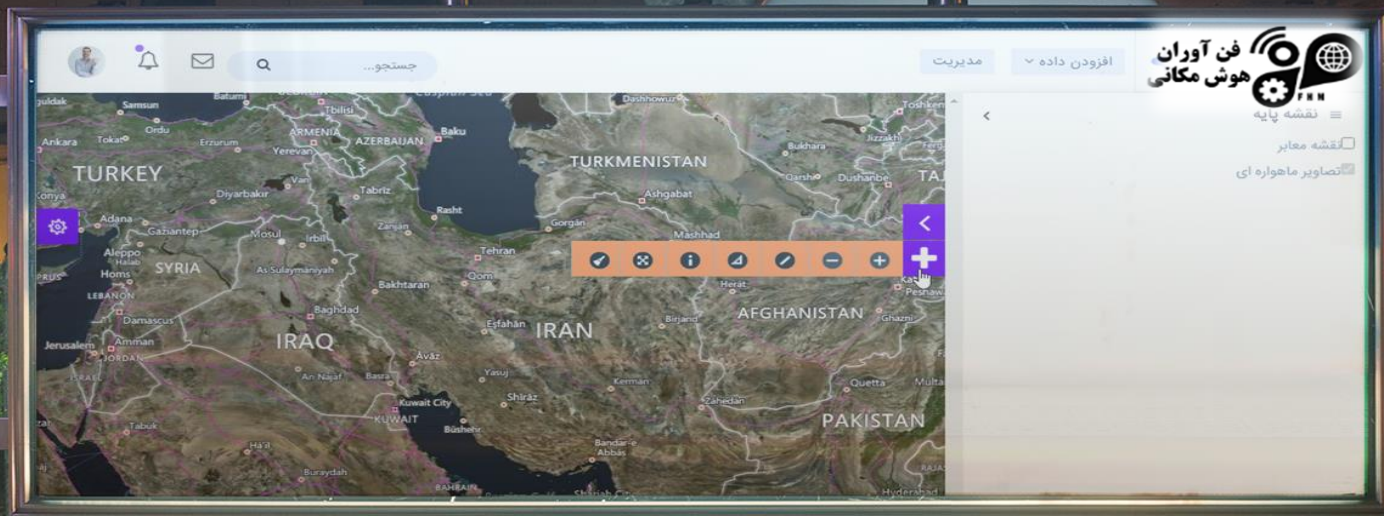
نتایج جست و جو

افزودن به نقدها فراداده

-
-
-
-

شرکت رهپویان	city_point	۳
شرکت رهپویان	farhangi_polygon	۴





Thanks you for your attention